

The Psychology Department

St Francis of Assisi



A Level course content



| Topics | |
|---------|---|
| Paper 1 | <u>Introductory Topics in Psychology</u> Social Influence, Memory, Psychopathology, Attachment |
| Paper 2 | <u>Psychology in Context</u> Biopsychology, Approaches, Research Methods |
| Paper 3 | <u>Issues & Options in Psychology</u> Issues & Debates, Relationships, Schizophrenia, Aggression |



Paper 1

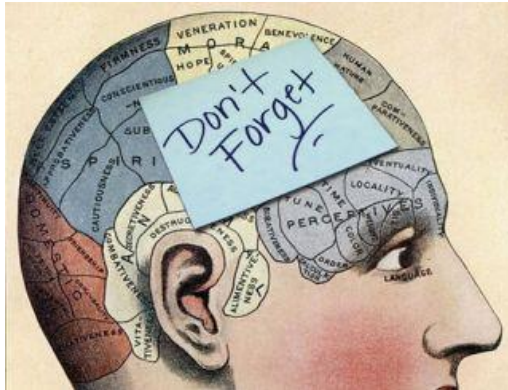
Introductory Topics in Psychology

All studied in year 12



Social Influence

*Conformity
Obedience
Social change
Minority
influence*



Memory

*Cognitive models
Eyewitness testimony
Cognitive interviews*



Psychopathology

*Explanations and
treatments of;
Phobias
OCD
Depression*



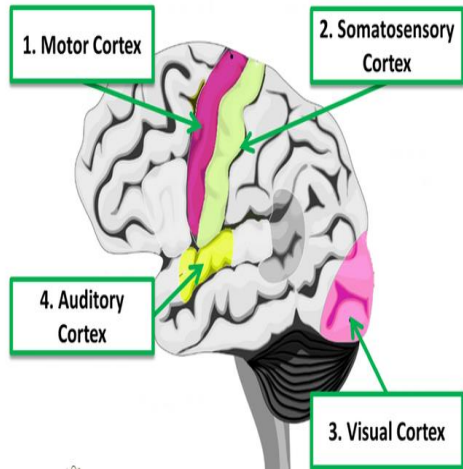
Attachment

*Types and
influences of
attachment
Animal studies*

Paper 2

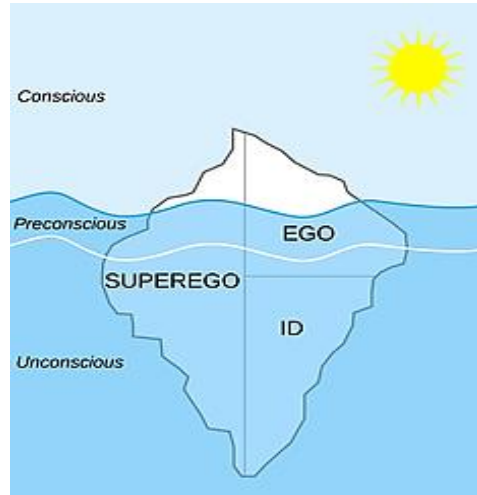
Psychology in Context

Split between year 12 and year 13



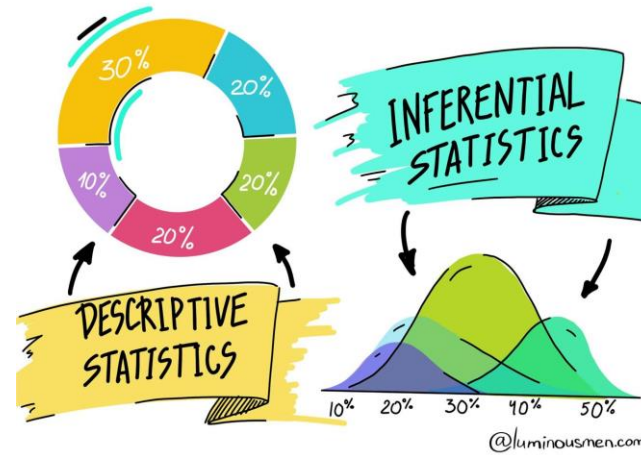
Biopsychology

*Neurons, Nervous System
Brain localization
Studying the brain
Biological rhythms*



Approaches

*Behaviourist and learning
Cognitive
Biological
Psychodynamic
Humanistic*



Research Methods

*Experimental methods and designs
Statistical analysis
Research reports
Ethical issues
Graphs and measures*



Paper 3

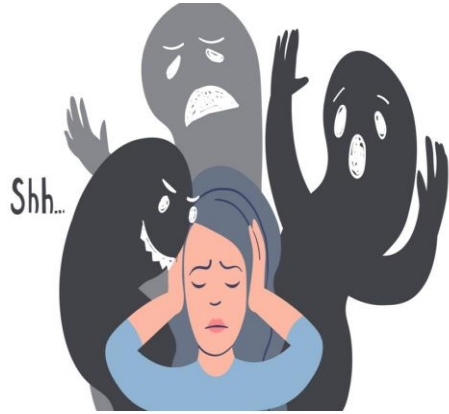
Issues & Options in Psychology

Studied in year 13



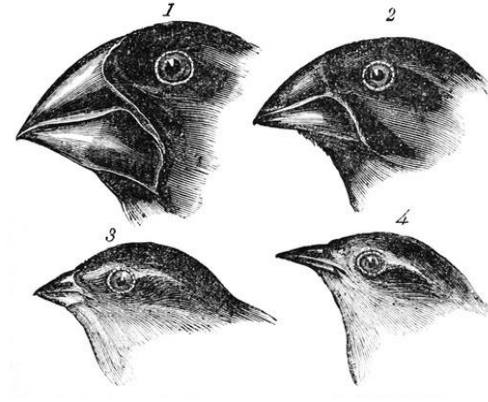
Issues & Debates

Nature vs nurture
Determinism vs free will
Methodology and ethics



Schizophrenia

Psychodynamic and biological explanations
Treatments and therapies



Relationships

Evolutionary Explanations of attraction
Theories of romantic relationships
Virtual and parasocial

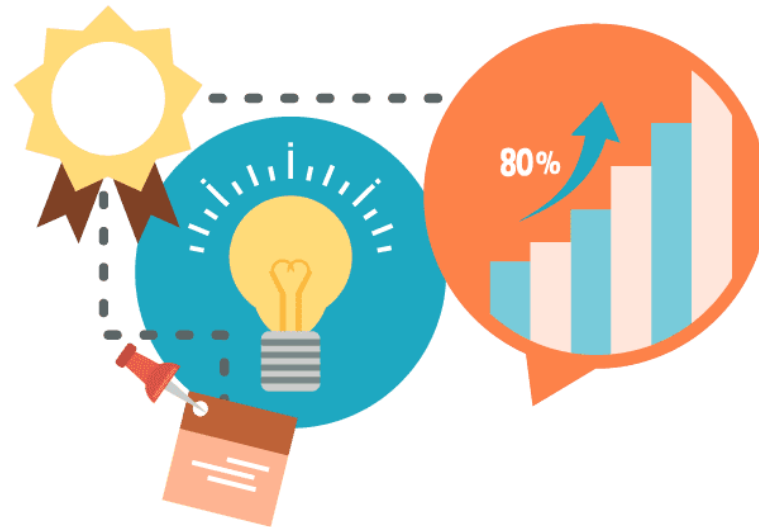


Aggression

Evolutionary explanations
Media influences
Neural and hormonal mechanisms

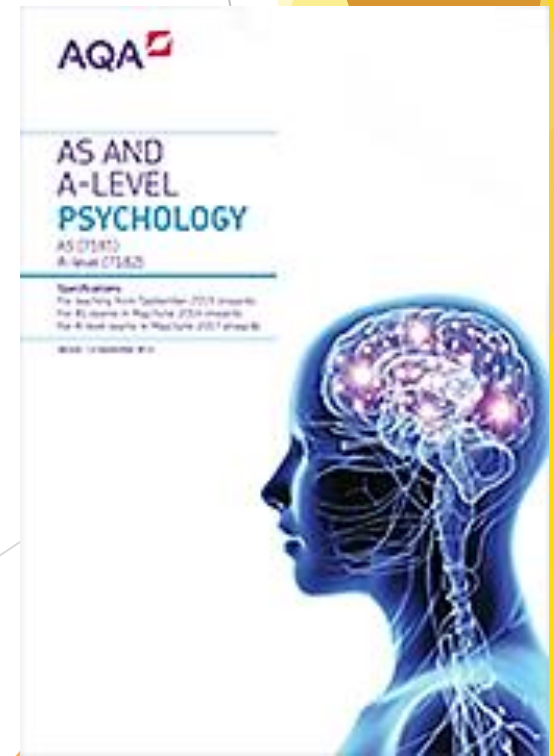
Skills

- ▶ Transferrable skills - evaluation, critical thinking, analysis
- ▶ Literacy skills - essay writing
- ▶ Numeracy - handling data
- ▶ Research - experimental and investigative activities
- ▶ Application of Psychological knowledge



A Level exams for 2023 entry

| | Topics | Exams |
|---------|---|-----------|
| Paper 1 | <u>Introductory Topics in Psychology</u> Social Influence, Memory, Psychopathology, Attachment | June 2026 |
| Paper 2 | <u>Psychology in Context</u> Biopsychology, Approaches, Research Methods | June 2026 |
| Paper 3 | <u>Issues & Options in Psychology</u> Issues & Debates, Relationships, Schizophrenia, Aggression | June 2026 |



Exam results

| 2023 | 2022 | 2021 | 2020 |
|-----------------------------|-----------------------------|-----------------------------|-----------------------------|
| A*-B 35.0% | A*-B 58.0% | A*-B 42.0% | A*-B 37.5% |
| A*-C 69.0% | A*-C 79.0% | A*-C 83.9% | A*-C 62.2% |
| A*-E 97% | A-D 100% | A*-E 100% | A*-E 100% |



Prospects



- Teaching
- Research
- Advertising
- Marketing
- Business
- Recruitment
- Sales
- Police
- Social Work
- Midwifery
- Nursing

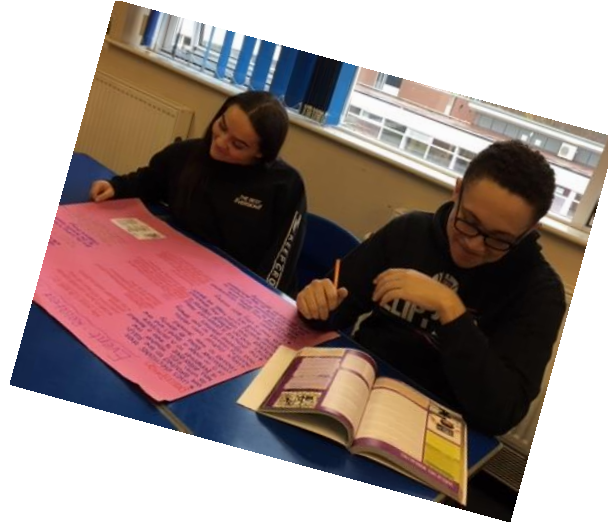


Psychology ambassador comments

Studying Psychology is an **enriching, fascinating experience** and I would thoroughly recommend choosing it as one of your A-level options, as it brings **life-long learning** and opportunities!

Psychology has opened my eyes to the ways and reasons why people behave. I especially love that psychology is **applicable to all of life**.

A-level Psychology has been both an extremely **fascinating and challenging** experience it has provided me with **crucial analytical and descriptive skills** that I will be able to take forward with me to any future experiences both at university and future career paths.



Questions...

Email: kpower@stfrancis.cc

