

Welcome to Geography

Geography is a living, breathing subject, constantly adapting itself to change. It is dynamic & relevant. For me, *geography* is a great adventure with a purpose.

Michael Palin



Why Geography



"The study of geography is about more than just knowing places on a map. It's about understanding the complexity of our world, appreciating the diversity of cultures that exists across continents. And in the end, it's about using all that knowledge to help bridge divides and bring people together."

Barrack Obama





Examination



At SFA we follow the Edexcel examination board. The course is broken into 4 sections;

Paper 1: Physical Geography

Paper 2: Human Geography

Paper 3: Synoptic unit

NEA: Geographical Investigation



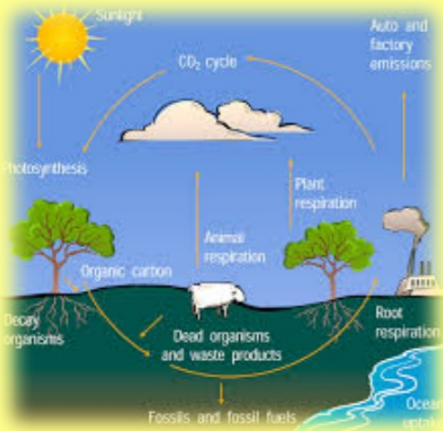
Results



- Average grade C in 2025 exams and average grade B 2024.
- Students going on to study Geography at university or into Geography based apprenticeships.



Component 1 - Physical



Component 1: Physical Geography – 30%

-Tectonic Processes and Hazards

-Coastal Landscapes and Change

-The Water Cycle and Water Insecurity

-The Carbon Cycle and Energy Security





Component 2- Human



Component 2: Human Geography - 30%

- Globalisation

- Shaping Places, Diverse Places

- Superpowers

- Global Development and Connections – Health,
Human Rights and Intervention





Component - Synoptic



Component 3: Synoptic paper - 20%

- The specification contains three synoptic themes;
- Players ● Attitudes and actions ● Futures and uncertainties.
- The synoptic investigation will be based on a geographical issue within a place-based context that links to the three synoptic themes and is rooted in two or more of the compulsory content areas.



Component 4- NEA



Component 3: Geographical Investigation - 20%

3000 - 4000 word individual investigation based upon data collected in the field.



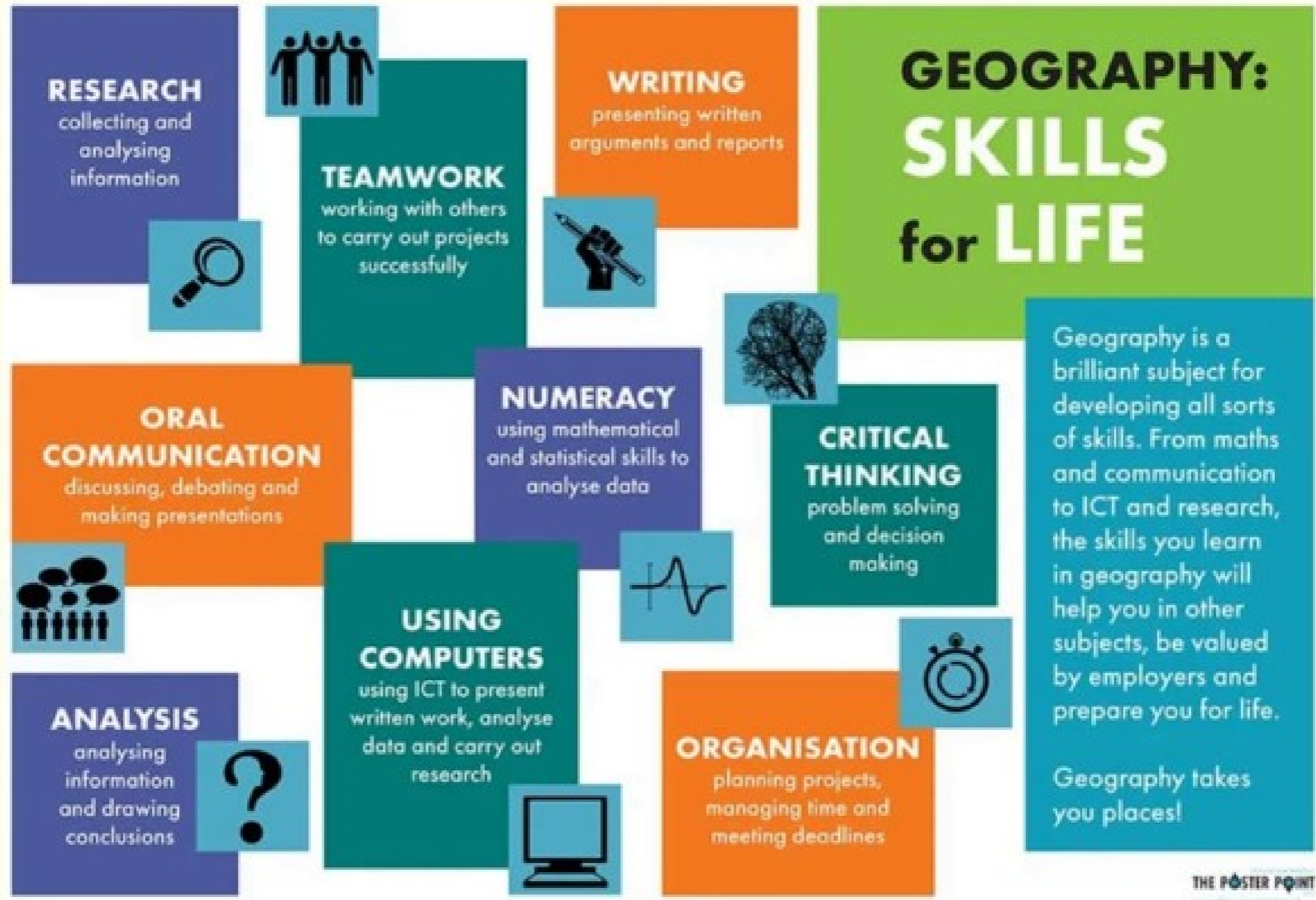


Year 12
Residential
Nettlecombe
court,
Somerset 2025





Where can A level Geography take you?





Where can A level Geography take you?





Specific courses



- Click to add Text
 - Human or Physical Geography
 - Earth Sciences
 - Environmental Science
 - Ecology
 - Tourism management
 - Anthropology
 - Business management
 - Landscape and architecture
 - Government and NGO studies



Where can A level Geography take you?



Geography is highly valued by universities as an A Level choice. The Russell Group named geography as one of the eight facilitating subjects. The Guardian has also identified geography as the 'must-have A Level'.

Even if you are working towards a course in medicine or veterinary medicine then geography is a good choice to give you the breadth that universities seek, as you will gain a clear understanding of how the environment affects health and survival of people, animals and ecosystems as well as enhancing your skills of writing essays and extended reports.



Overall



- In studying geography, you will investigate the links between people and their environment on both local and international scales and connect diverse issues in politics, economics and science to the landscape to give an understanding of how places are shaped.
- This will well equip you for a range of University courses and then a huge of employment opportunities. Anything from teaching to finance, environmental town planning to using GIS to improve crop yield.



Any questions?

